



Connecting People

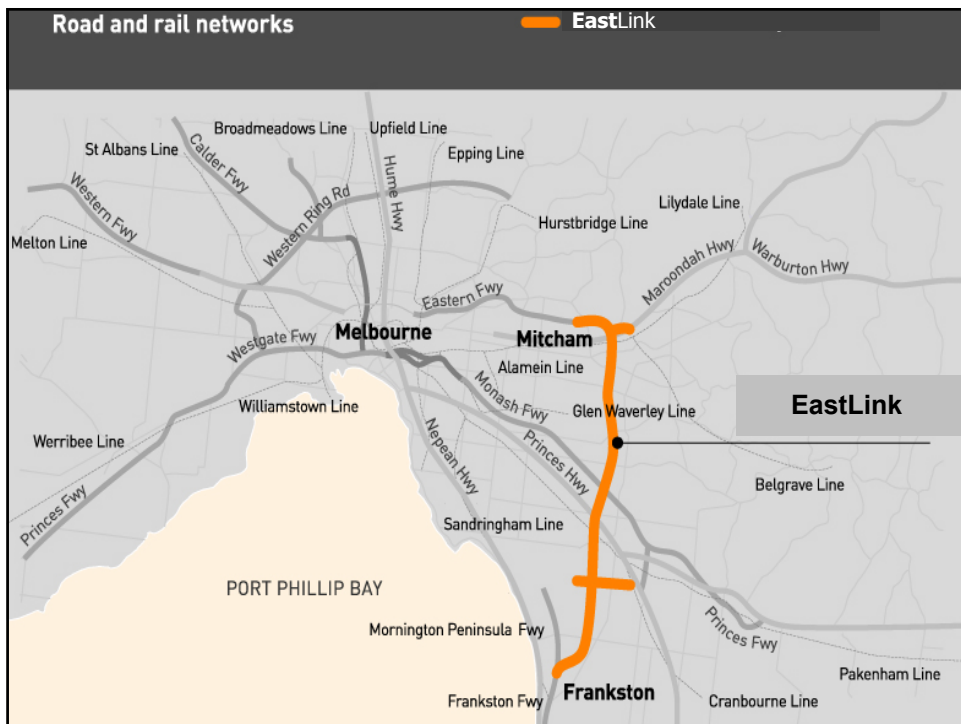
EastLink

Russell Cuttler – General Manager Risk and Delivery Strategies

AGENDA

- Background to Project
- Project Partners
- Overview of Project Scope and Delivery Mechanisms





MITCHAM TO FRANKSTON CORRIDOR

- More than 1.5 million people
- Population forecast to grow to 2.1 million by 2031
- Contains 43% of Melbourne's population
- Generates 40% of Melbourne's manufacturing output
- 3 million trips per day in the Mitcham to Frankston corridor
- High levels of congestion on existing roads
 - Springvale Road – 47 sets of traffic lights
 - Stud Road – 36 sets of traffic lights
- Strong residential, commercial and industrial property development

PROJECT HISTORY

- Corridor created mid 1960's
- Eastern Freeway extension and Scoresby Freeway combined October 2002 – 'Mitcham to Frankston Project'
- EOI for Finance, Design, Construct, Operate and Maintain called May 2003
- Concession awarded to Connect East November 2004
- Premier Steve Bracks turned the first sod and re-named the project EastLink on 23 March, 2005
- Nearly 2 years since award of Concession
- Just over 18 months actual construction



PROJECT PARTNERS

- Thiess, John Holland and Macquarie Bank formed the ConnectEast consortium to bid for the EastLink Concession April 2003
- ConnectEast Group (ConnectEast) is a publicly listed entity on the Australian Stock Market
- Total financed value of project \$3.8B
- IPO raised \$1.1 billion of equity from 11,000+ investors
- ConnectEast Group has been established to operate EastLink for a concession period of 39 years
- Thiess and John Holland (TJH) awarded the Design and Construct (D&C) Contract by ConnectEast
- Design and Construct Contract Value \$2.5B



THE LANDMARK EASTLINK PROJECT

- 39 kilometre motorway end-to-end
- Three lanes in each direction for 33km from Eastern Freeway at the northern end
- Two lanes in each direction for 6km from Thompson Road to Frankston Freeway
- 6km bypasses at Ringwood and Dandenong
- Twin, 3-lane 1.6km tunnels under Mullum Mullum Creek
- Shared use path from Mitcham to Frankston
- 17 major interchanges
- Direct freeway-to-freeway connections at Eastern, Monash and Frankston Freeways

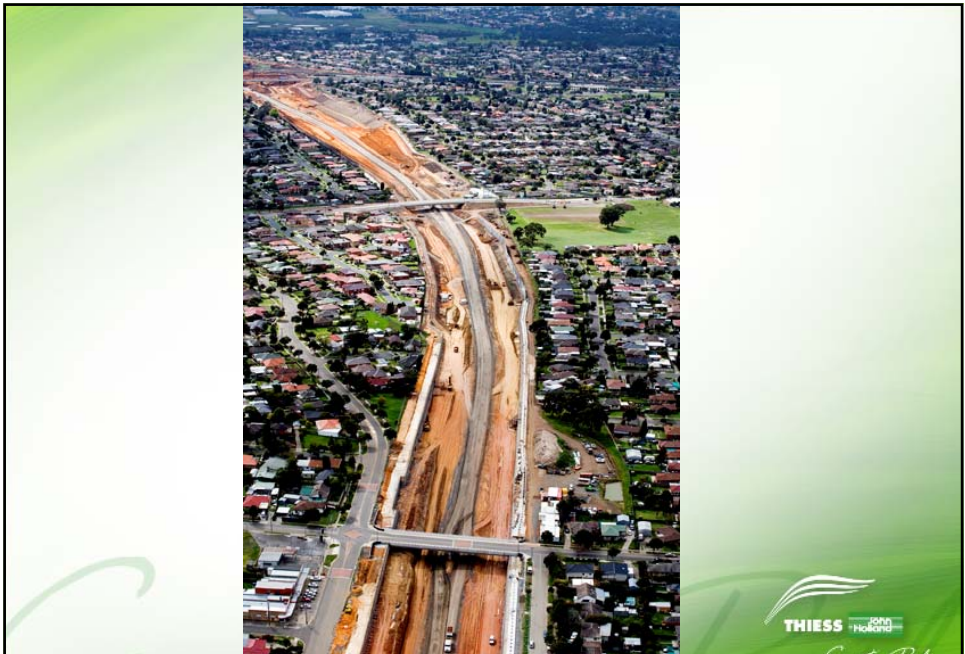


EARTHWORKS

- 5.7 million m³ cut
- 7.5 million m³ fill
- Bridges built early in Dandenong to use for haul on corridor (2.0M m³)
- East – West arterials – mass haul impact
- Scraper fleets where possible
- Highway truck fleets for longer haul/cross arterials
- 1.5M m³ imported fill at southern end
- Silurian materials – permits investment to work through winter
- Currently in excess 80% complete



Earthworks



Earthworks Haul





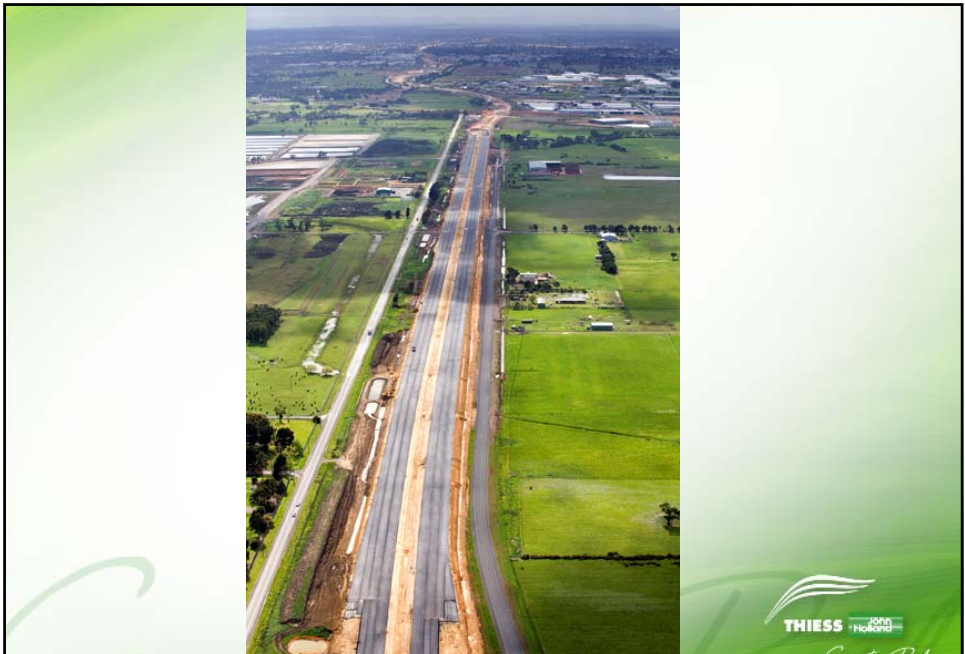
Haul road operation

PAVEMENT

- Total pavement area – 2 050 000 m²
 - Motorway and ramps 1 620 000 m²
 - Arterials 430 000 m²
- All flexible (asphalt) pavements
 - Motorway – mainly full depth (asphalt over capping)
 - Arterials and ramps – deep strength (asphalt over CTCR)
- 0.5 million tonnes of crushed rock and 1.3 million tonnes asphalt
- Contractors
 - Boral Asphalt – northern section
 - FRH – southern section
- Production 80,000 tonne/month



Asphalt



Pavement



- 2 tunnels
- 55 Super T bridges (1650 beams)
- 9 steel box beam bridges
- 3 rail bridges
- 6 bridge widenings
- 6 major pedestrian bridges
- 70 bridges currently under construction

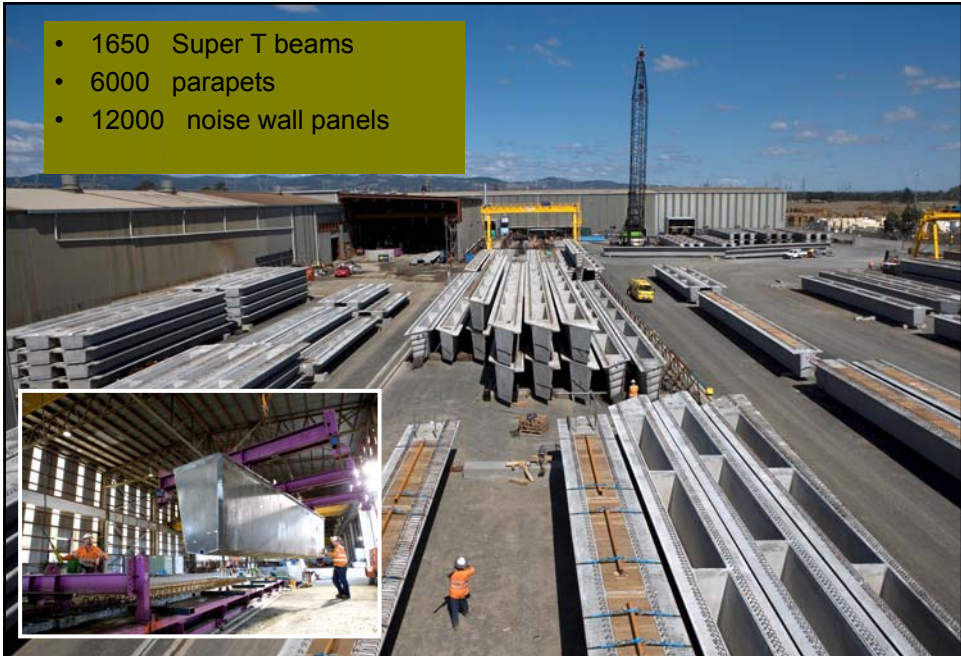


103 Structures



Structures – Super T Beams

- 1650 Super T beams
- 6000 parapets
- 12000 noise wall panels



Precast Haulage



Precast Haulage from Latrobe Valley



Monash Interchange



Monash Interchange

TUNNELS

- Tunnel to protect Mullum Mullum Valley
- Tunnel section 15m (w) x 12m (h)
- 2 Tunnels 1.6 km long
- Excavation – Heading
 - from both east and west using a combination of 4 roadheaders and drill and blast
 - face area 160m² with total excavation volume of 475,000m³
 - rock strength up to 200 Mpa – silurian materials
- Excavation – Bench
 - rock breakers on each heading i.e. four fronts
 - Additional roadheader also being used
- Secondary concrete lining
 - Precast invert units
 - Formed insitu obvert/crown
- Both tunnels will breakthrough by Christmas this year



Roadheader - Voest Alpine 300kw I-Cut



Tunnel excavation



Tunnel – Ventilation Station

URBAN AND LANDSCAPE DESIGN

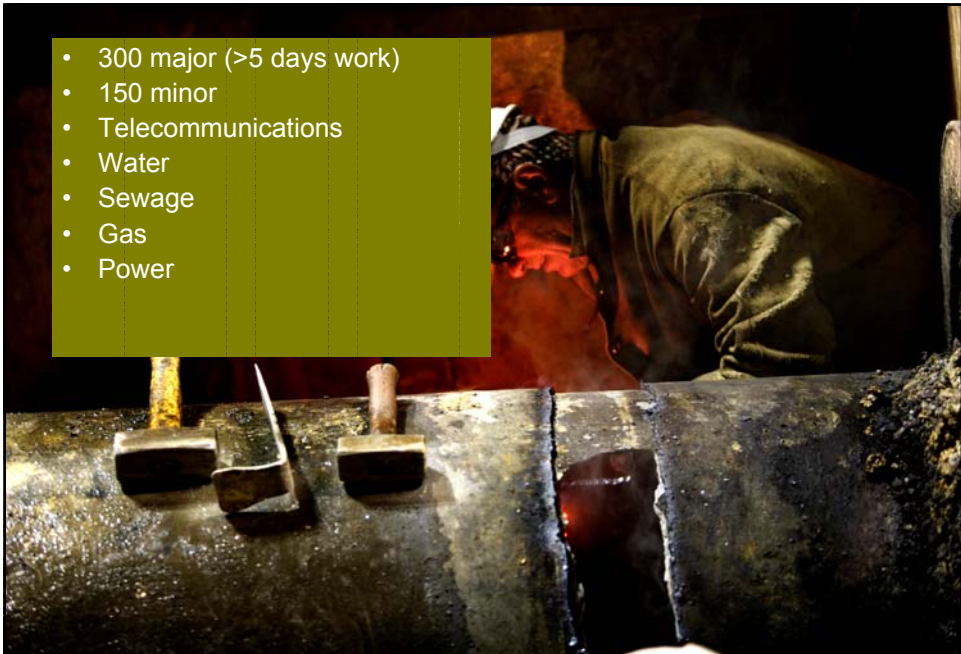
- Continuation of high quality Eastern Freeway theme
- Utilises native colours
- Blends with native landscape
- Integration with existing parklands and bicycle paths
- More than 4 million plants along the roadway
- Creating 500-hectare linear parkland
- Water sensitive urban design
- Integrated wetlands for community use
- Noise Walls – over 180 000 m²



Noise Walls: Cantilever



Noise Walls: Post + Panel



- 300 major (>5 days work)
- 150 minor
- Telecommunications
- Water
- Sewage
- Gas
- Power

Utilities Protection and Relocation

TOLLING

- SICE (Spain) to provide whole tolling system
 - 26 gantries to house Etag readers and video tolling cameras
 - Back office computer system
- SICE, delivered world class toll system in December 2004 on 'Autopista Central' – Santiago, Chile
- Toll system interoperable with other Australian toll roads



TP4 – Erection of first tolling gantry

MECHANICAL & ELECTRICAL

- United (Alston) providing all mechanical and electrical under Design and Construct Contract
 - Tunnel ventilation, fire and life safety
 - Traffic and plant management control systems
 - Traffic signals and street lighting
- Tolling and M&E Systems within ELOC Building



Jet Fan Testing - Flaktwoods, UK



Progress on ELOC building

PROGRAM

- November 2008 contractual completion date
- Aiming to build up contingency against this date
- Peak turnover > \$100m/month (already achieved)
- Key resources statistics
 - Labour force currently in excess 2500
 - Staff around 550
 - Designers and Design Reviewers peaked in excess of 300
- In excess \$900m contracts awarded to date

INDUSTRIAL ARRANGEMENTS

- TJH Certified Agreement for EastLink
 - Flexible work arrangements balanced by wage rates and conditions
 - Genuine bonus arrangements well received by workforce
 - Communication between management workforce and union representatives imperative



SUMMARY

- Australia's largest road construction project
- Tracking positively against all KPIs at present
- Demonstrates capability and flexibility of Australia's construction industry



